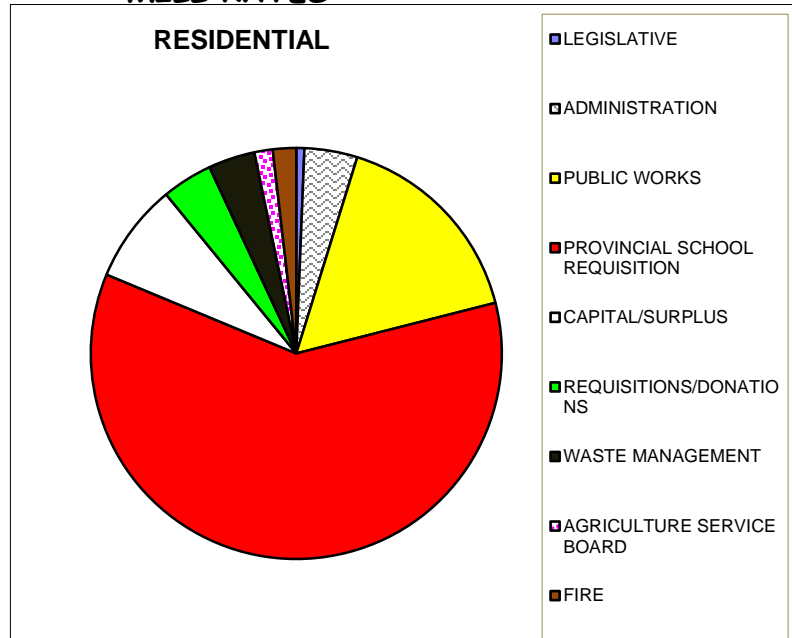
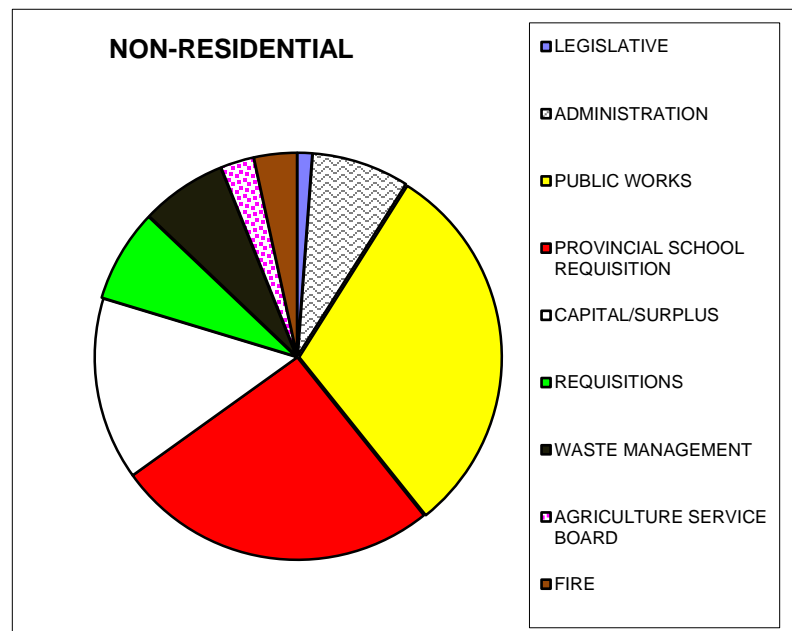


2018 MILL RATES

RESIDENTIAL	
LEGISLATIVE	0.027
ADMINISTRATION	0.177
PUBLIC WORKS	0.690
PROVINCIAL SCHOOL REQUISITION	2.560
CAPITAL/SURPLUS	0.332
REQUISITIONS/DONATIONS	0.169
WASTE MANAGEMENT	0.156
AGRICULTURE SERVICE BOARD	0.061
FIRE	0.08
Total Mill rate	4.250



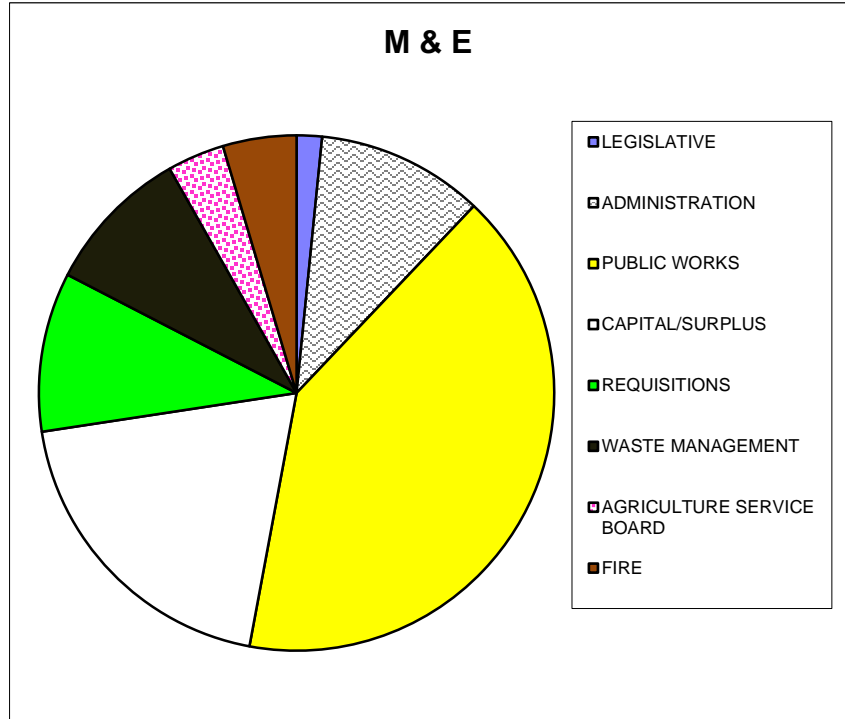
NON-RESIDENTIAL	
LEGISLATIVE	0.172
ADMINISTRATION	1.135
PUBLIC WORKS	4.420
PROVINCIAL SCHOOL REQUISITION	3.770
CAPITAL/SURPLUS	2.128
REQUISITIONS	1.081
WASTE MANAGEMENT	0.997
AGRICULTURE SERVICE BOARD	0.388
FIRE	0.499
Total Mill Rate	14.590



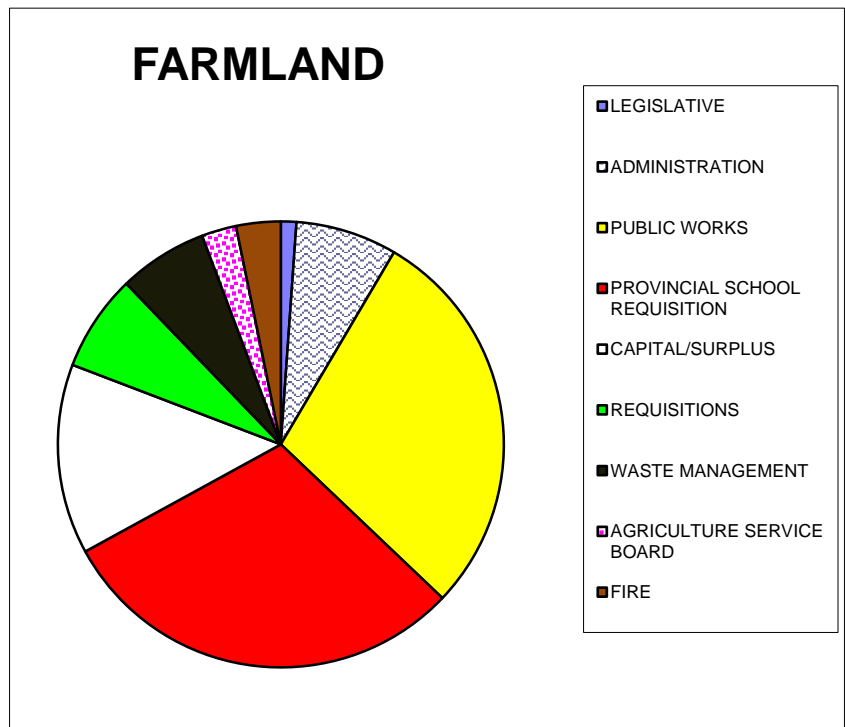
% of total expenses by category

2018 MILL RATES

M&E	
LEGISLATIVE	0.172
ADMINISTRATION	1.135
PUBLIC WORKS	4.420
CAPITAL/SURPLUS	2.128
REQUISITIONS	1.081
WASTE MANAGEMENT	0.997
AGRICULTURE SERVICE BOARD	0.388
FIRE	0.499
Total Mill Rate	10.820



FARMLAND	
LEGISLATIVE	0.096
ADMINISTRATION	0.629
PUBLIC WORKS	2.449
PROVINCIAL SCHOOL REQUISITION	2.560
CAPITAL/SURPLUS	1.179
REQUISITIONS	0.599
WASTE MANAGEMENT	0.552
AGRICULTURE SERVICE BOARD	0.215
FIRE	0.28
Total Mill rate	8.555



% of total expenses by category

2018 MILL RATES

LINEAR	
LEGISLATIVE	0.172
ADMINISTRATION	1.135
PUBLIC WORKS	4.420
PROVINCIAL SCHOOL REQUISITION	3.770
CAPITAL/SURPLUS	2.128
REQUISITIONS	1.081
WASTE MANAGEMENT	0.997
AGRICULTURE SERVICE BOARD	0.388
FIRE	0.499
Total Mill Rate	14.590

