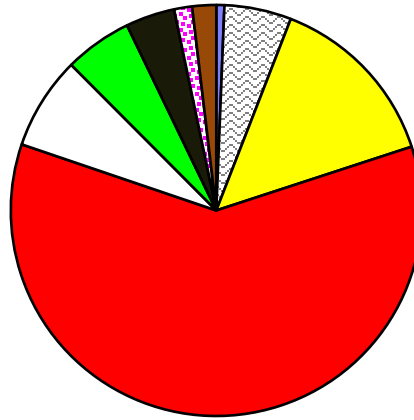


2019 MILL RATES

RESIDENTIAL

LEGISLATIVE	0.027
ADMINISTRATION	0.224
PUBLIC WORKS	0.598
PROVINCIAL SCHOOL REQUISITION	2.560
CAPITAL/SURPLUS	0.311
REQUISITIONS/DONATIONS	0.226
WASTE MANAGEMENT	0.164
AGRICULTURE SERVICE BOARD	0.060
FIRE	0.08
Total Mill rate	4.250

RESIDENTIAL

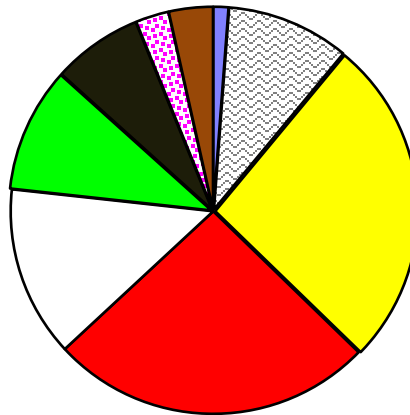


- LEGISLATIVE
- ADMINISTRATION
- PUBLIC WORKS
- PROVINCIAL SCHOOL REQUISITION
- CAPITAL/SURPLUS
- REQUISITIONS/DONATIONS
- WASTE MANAGEMENT
- AGRICULTURE SERVICE BOARD
- FIRE

NON-RESIDENTIAL

LEGISLATIVE	0.175
ADMINISTRATION	1.433
PUBLIC WORKS	3.827
PROVINCIAL SCHOOL REQUISITION	3.770
CAPITAL/SURPLUS	1.990
REQUISITIONS	1.449
WASTE MANAGEMENT	1.048
AGRICULTURE SERVICE BOARD	0.386
FIRE	0.512
Total Mill Rate	14.590

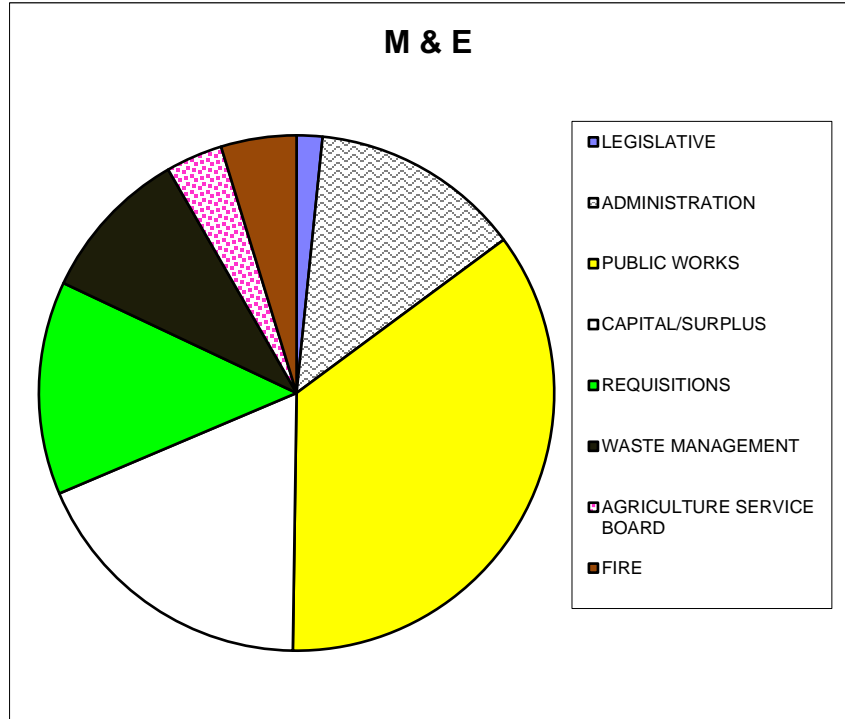
NON-RESIDENTIAL



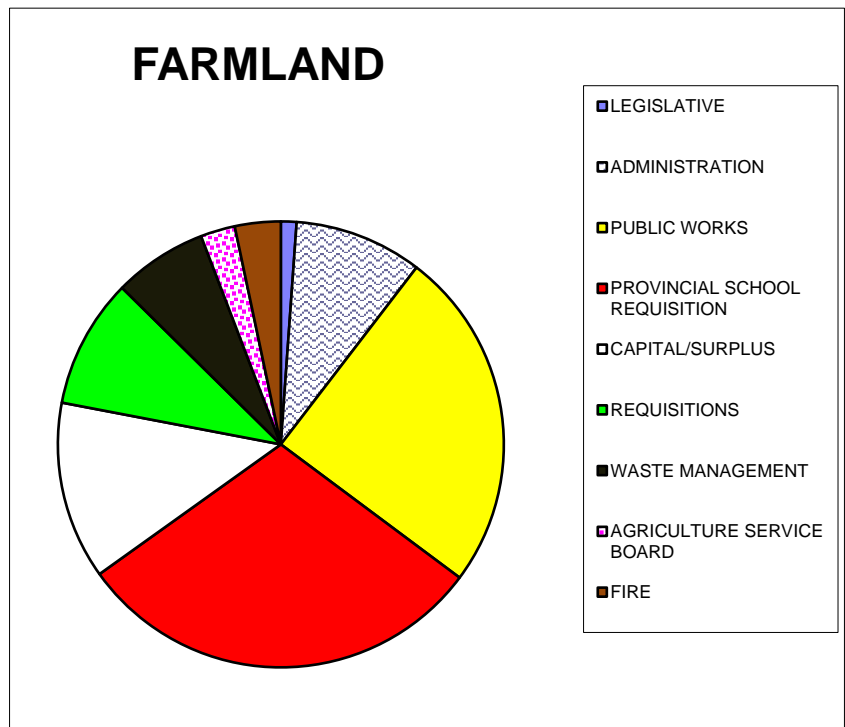
- LEGISLATIVE
- ADMINISTRATION
- PUBLIC WORKS
- PROVINCIAL SCHOOL REQUISITION
- CAPITAL/SURPLUS
- REQUISITIONS
- WASTE MANAGEMENT
- AGRICULTURE SERVICE BOARD
- FIRE

2019 MILL RATES

M&E	
LEGISLATIVE	0.175
ADMINISTRATION	1.433
PUBLIC WORKS	3.827
CAPITAL/SURPLUS	1.990
REQUISITIONS	1.449
WASTE MANAGEMENT	1.048
AGRICULTURE SERVICE BOARD	0.386
FIRE	0.512
Total Mill Rate	10.820



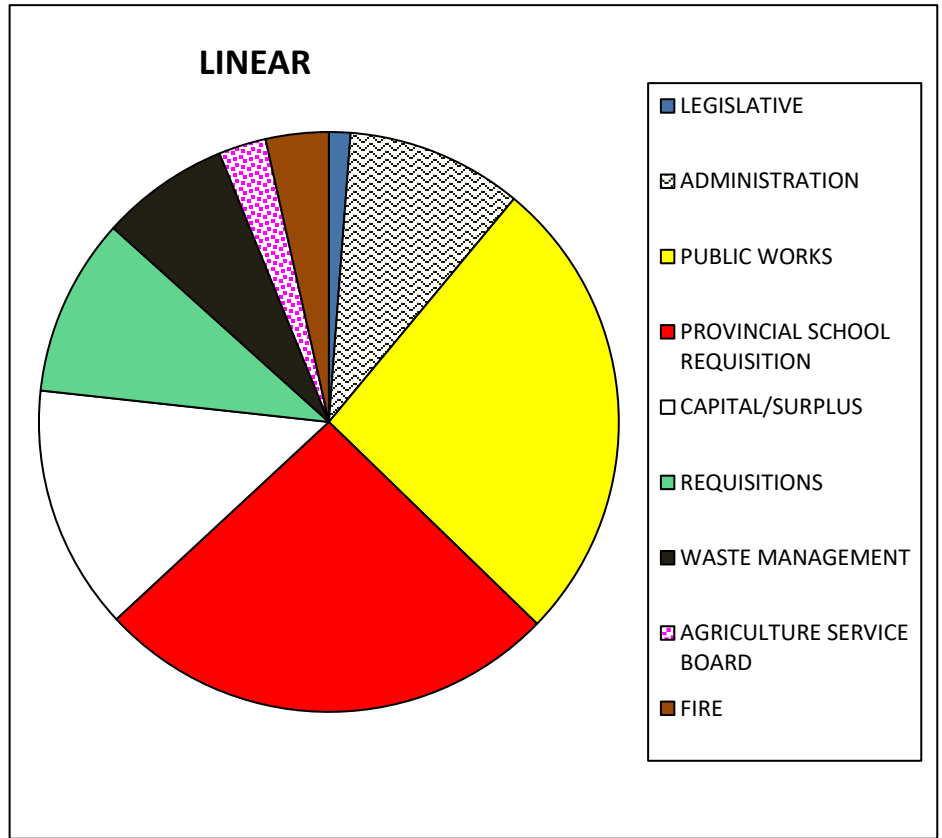
FARMLAND	
LEGISLATIVE	0.097
ADMINISTRATION	0.794
PUBLIC WORKS	2.120
PROVINCIAL SCHOOL REQUISITION	2.560
CAPITAL/SURPLUS	1.102
REQUISITIONS	0.803
WASTE MANAGEMENT	0.581
AGRICULTURE SERVICE BOARD	0.214
FIRE	0.28
Total Mill rate	8.555



% of total expenses by category

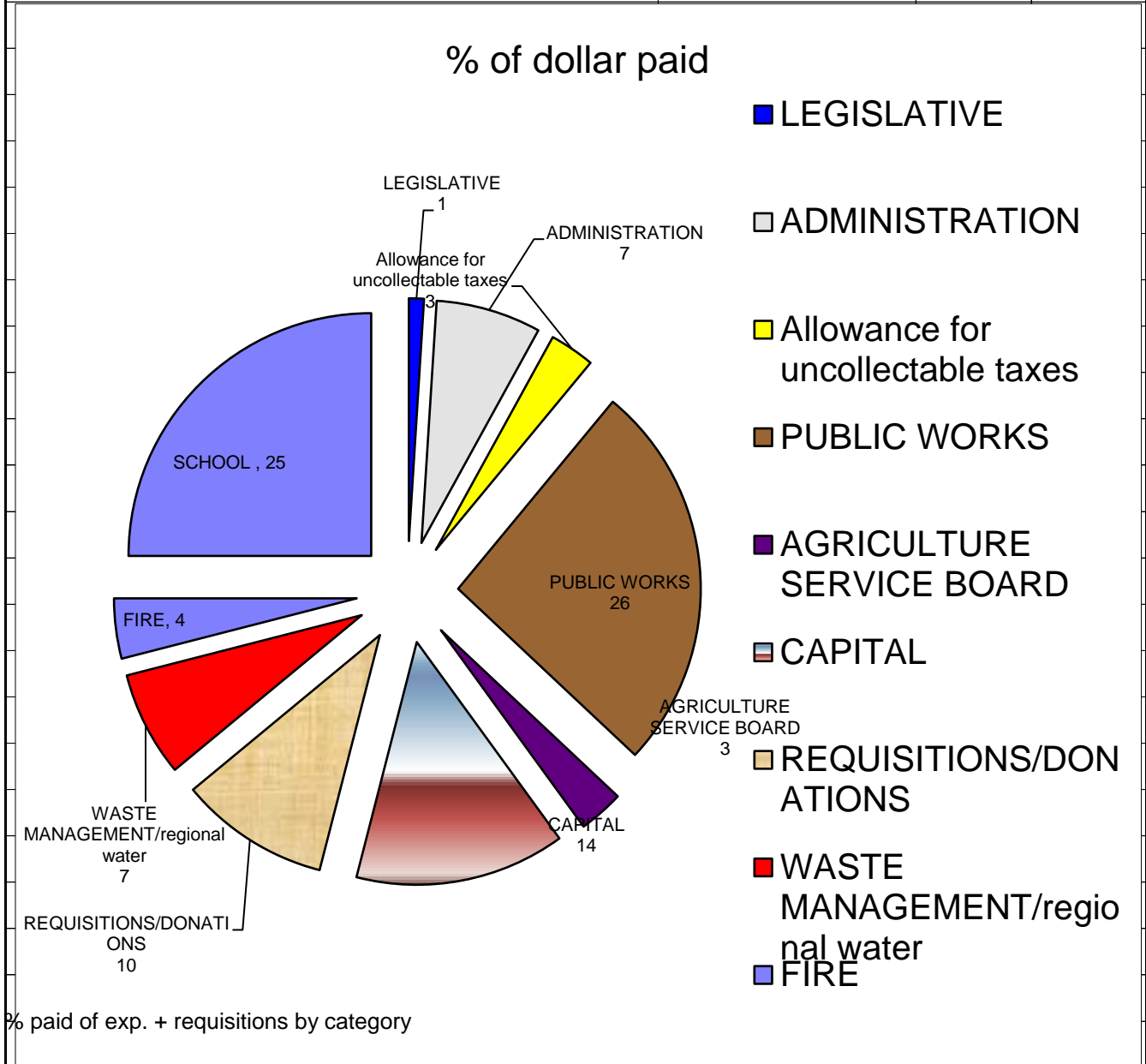
2019 MILL RATES

LINEAR	
LEGISLATIVE	0.175
ADMINISTRATION	1.433
PUBLIC WORKS	3.827
PROVINCIAL SCHOOL REQUISITION	3.770
CAPITAL/SURPLUS	1.990
REQUISITIONS	1.449
WASTE MANAGEMENT	1.048
AGRICULTURE SERVICE BOARD	0.386
FIRE	0.512
Total Mill Rate	14.590



**2019
MILL
RATES**

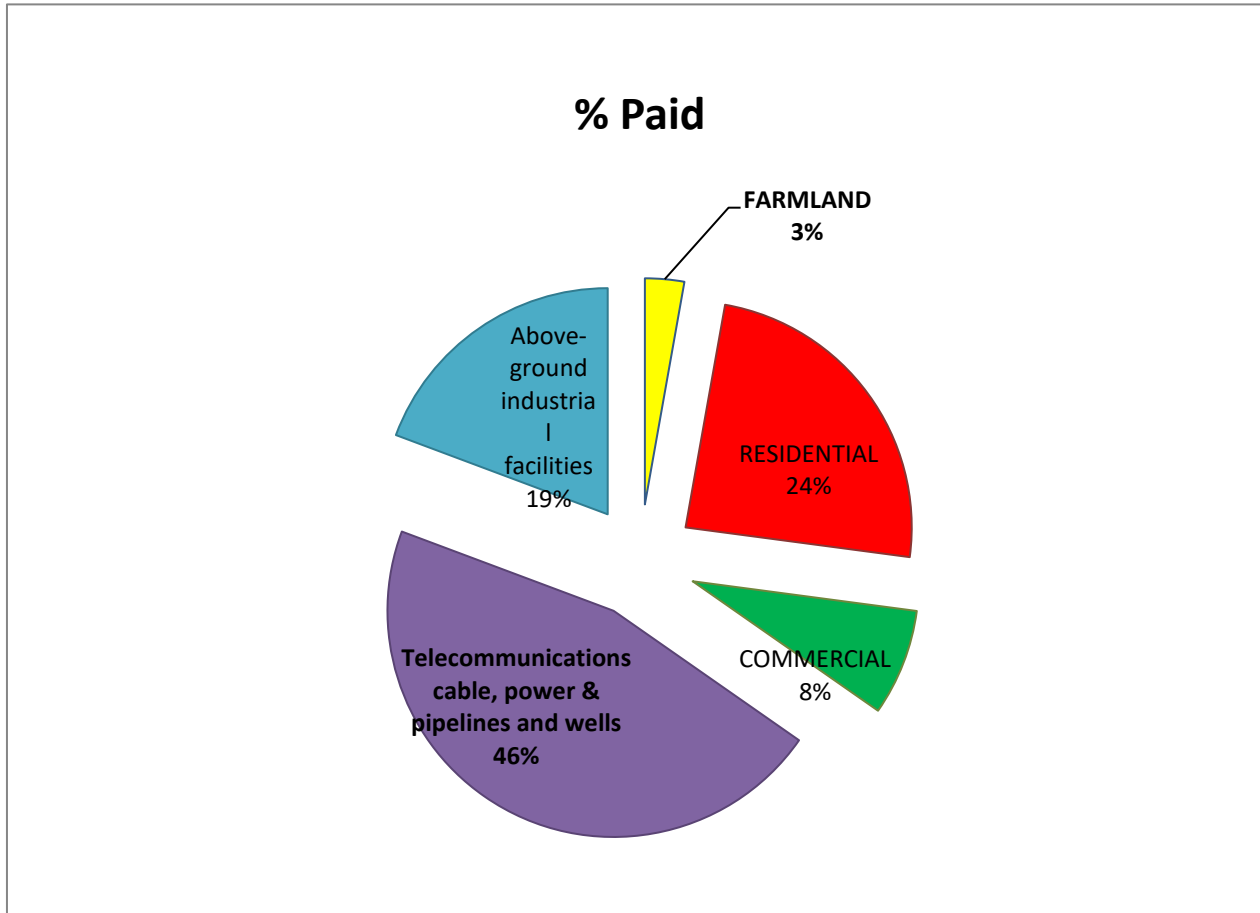
CATEGORY	% of dollar paid	
LEGISLATIVE	1	
ADMINISTRATION	7	
Allowance for uncollectable taxes	3	
PUBLIC WORKS	26	
AGRICULTURE SERVICE BOARD	3	
CAPITAL	14	
REQUISITIONS/DONATIONS	10	
WASTE MANAGEMENT/regional water	7	
FIRE	4	
SCHOOL	25	



**2019
MILL
RATES**

this chart total exp + ASFF			

2019
 % of Taxes Paid by Category
 \$26,494,957.88



FARMLAND	2.80%
RESIDENTIAL	24.30%
COMMERCIAL	7.60%
Telecommunications cable, power & pipelines and wells	46.00%
Above-ground industrial facilities	19.30%

instructions

Calculate The Total percent of expenses/category (total expenses plus rimoka and cap (not ASFF)) = 100% next equate that percent to the mill rate example IF PW expenses were 50% and the mill rate for linear was 10 than 5 mills would be going to PW the mill rate for the school is what it is it is only the municipal mill rate %