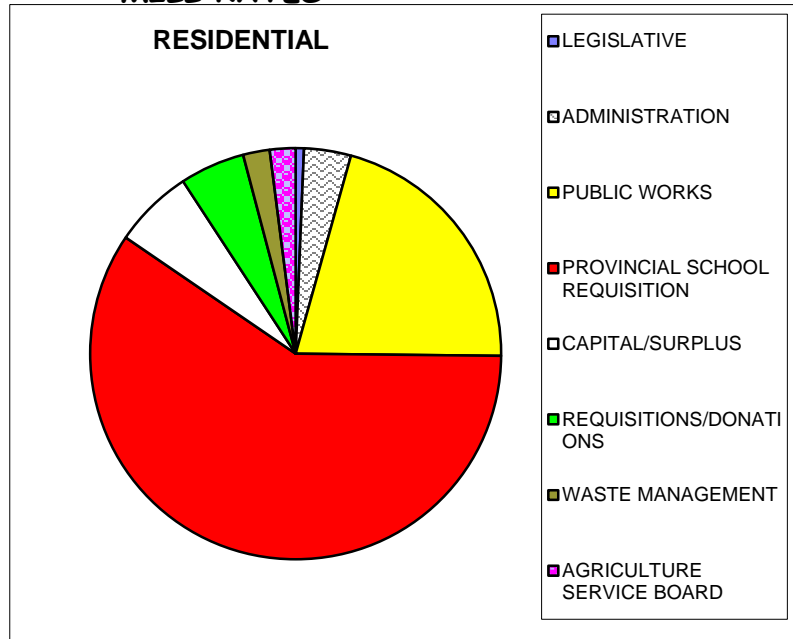
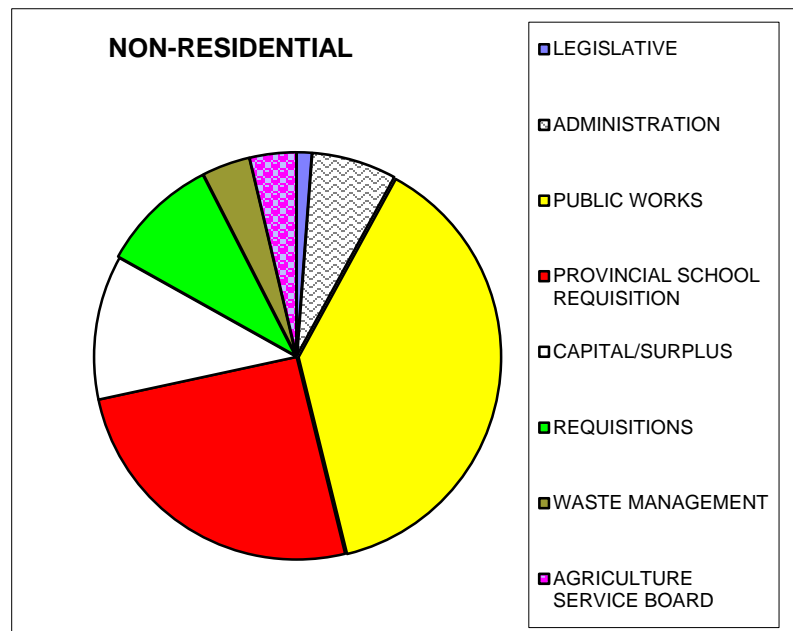


2012 MILL RATES

RESIDENTIAL	
LEGISLATIVE	0.027
ADMINISTRATION	0.154
PUBLIC WORKS	0.866
PROVINCIAL SCHOOL REQUISITION	2.470
CAPITAL/SURPLUS	0.260
REQUISITIONS/DONATIONS	0.212
WASTE MANAGEMENT	0.087
AGRICULTURE SERVICE BOARD	0.084
Total Mill rate	4.160



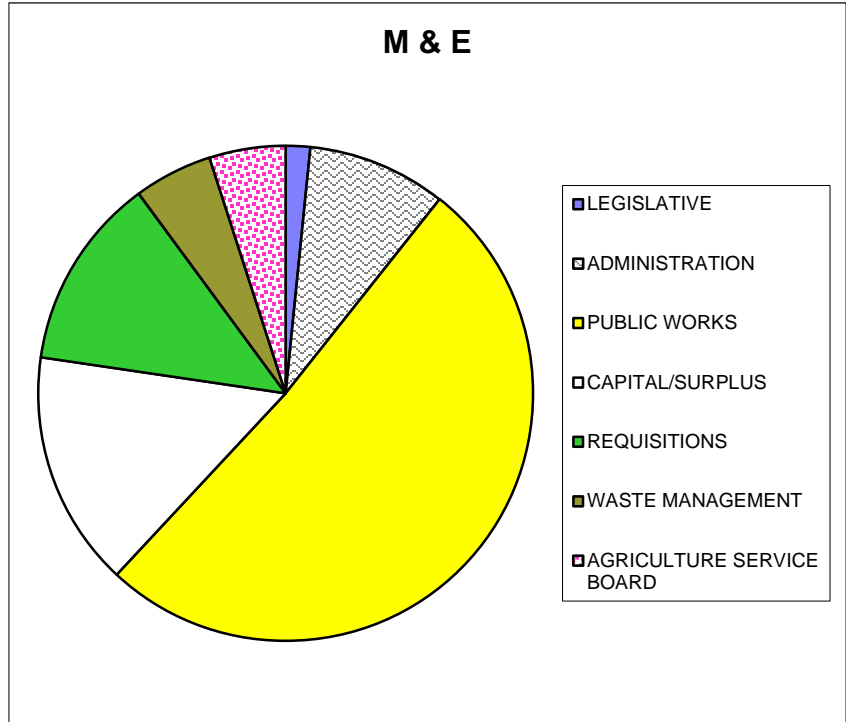
NON-RESIDENTIAL	
LEGISLATIVE	0.173
ADMINISTRATION	0.982
PUBLIC WORKS	5.546
PROVINCIAL SCHOOL REQUISITION	3.700
CAPITAL/SURPLUS	1.666
REQUISITIONS	1.360
WASTE MANAGEMENT	0.554
AGRICULTURE SERVICE BOARD	0.539
Total Mill Rate	14.520



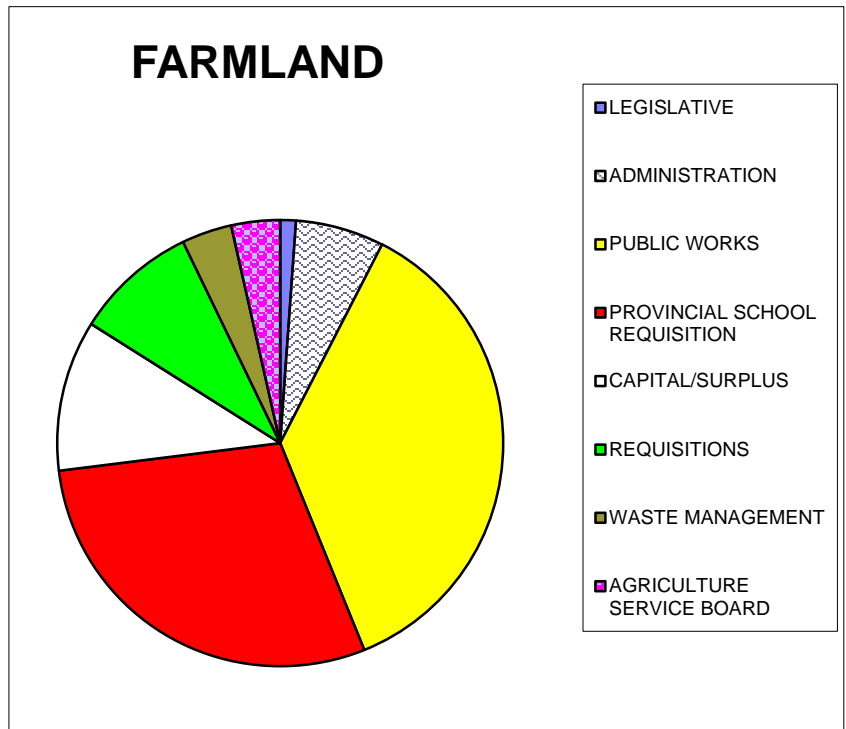
% of total expenses by category

2012 MILL RATES

M&E	
LEGISLATIVE	0.173
ADMINISTRATION	0.982
PUBLIC WORKS	5.546
CAPITAL/SURPLUS	1.666
REQUISITIONS	1.360
WASTE MANAGEMENT	0.554
AGRICULTURE SERVICE BOARD	0.539
Total Mill Rate	10.820



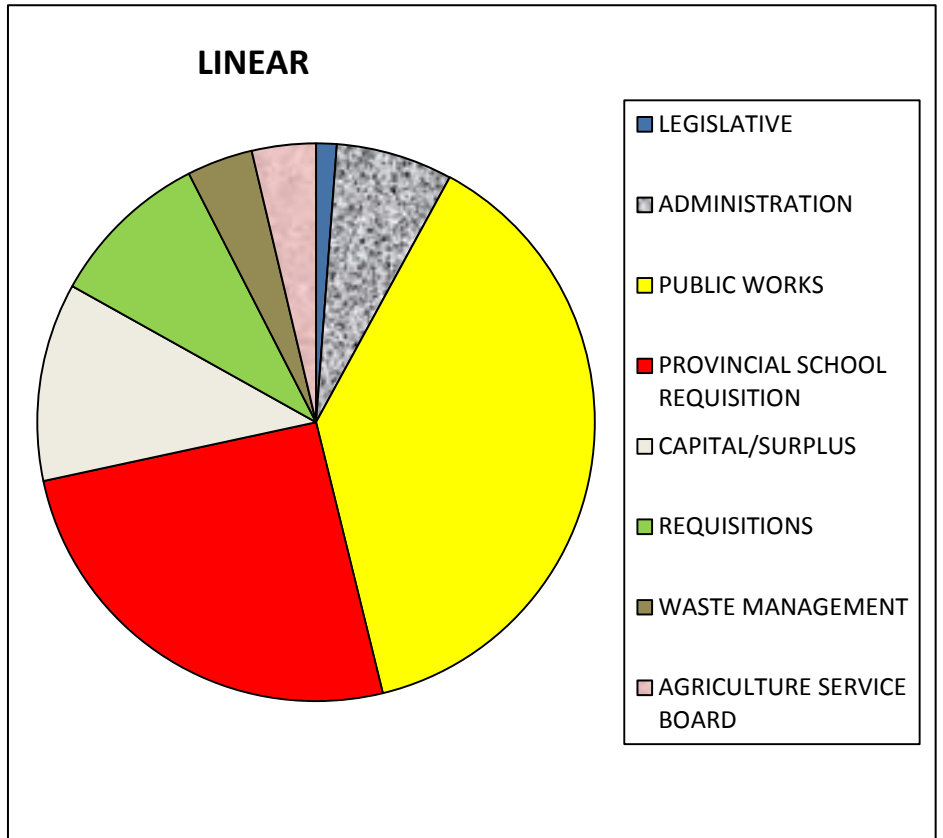
FARMLAND	
LEGISLATIVE	0.096
ADMINISTRATION	0.544
PUBLIC WORKS	3.072
PROVINCIAL SCHOOL REQUISITION	2.470
CAPITAL/SURPLUS	0.924
REQUISITIONS	0.753
WASTE MANAGEMENT	0.307
AGRICULTURE SERVICE BOARD	0.299
Total Mill rate	8.465



% of total expenses by category

2012 MILL RATES

LINEAR	
LEGISLATIVE	0.173
ADMINISTRATION	0.982
PUBLIC WORKS	5.546
PROVINCIAL SCHOOL REQUISITION	3.700
CAPITAL/SURPLUS	1.666
REQUISITIONS	1.360
WASTE MANAGEMENT	0.554
AGRICULTURE SERVICE BOARD	0.539
Total Mill Rate	14.520



% of total expenses by category