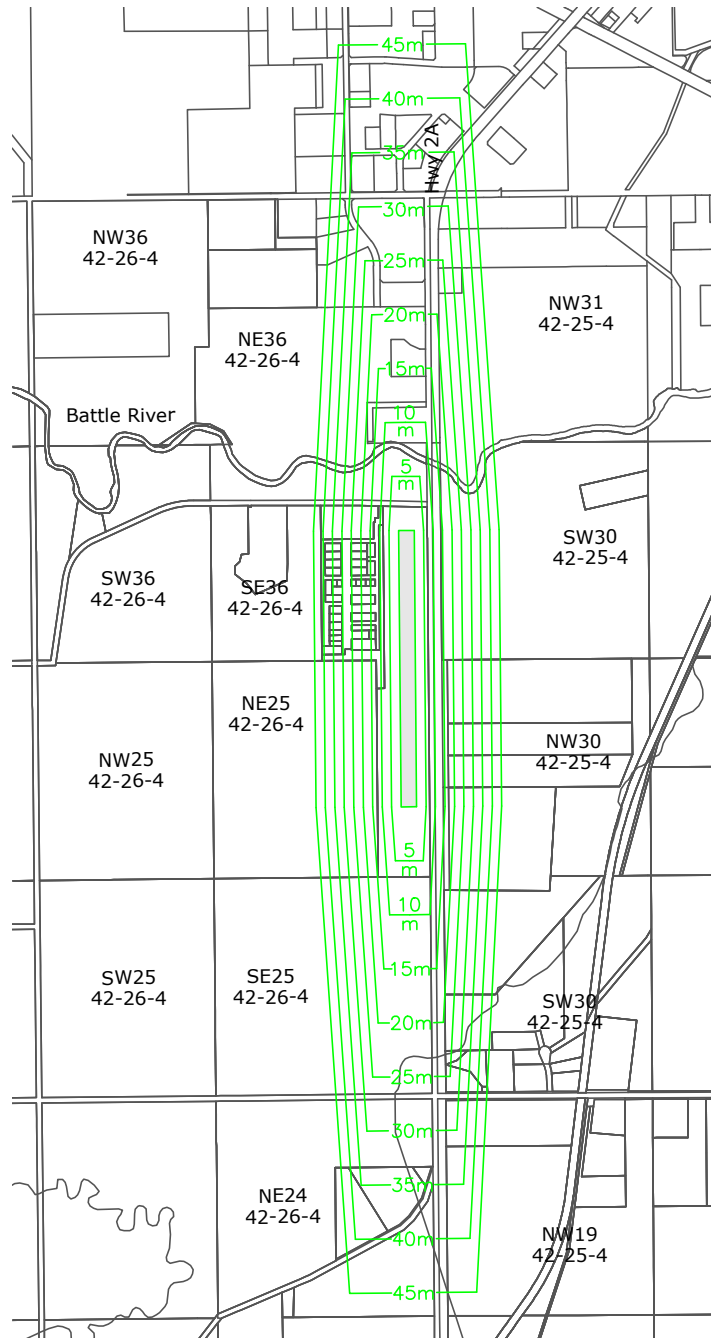


# Ponoka County Land Use Bylaw 7-08-LU



Municipal Boundary

This map shows the maximum height of obstructions consistent with aviation safety, measured from the elevation of the runway.

Because aviation is regulated by the federal government, this map has no legal authority, and is shown simply as a guide. See bylaw text regarding regulation of land use.

Runway elevation is 813.5m

## Height Limitations Map Ponoka Airport



# Map 50