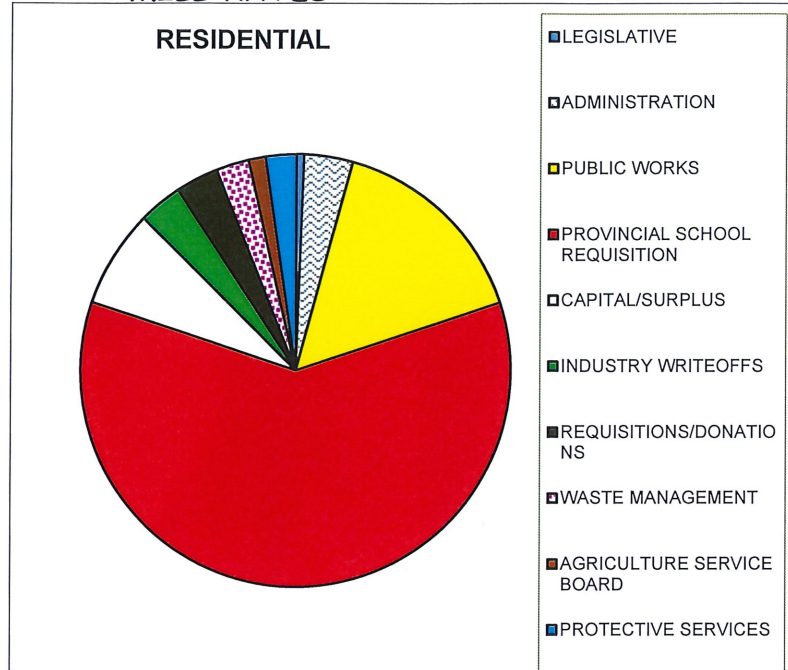
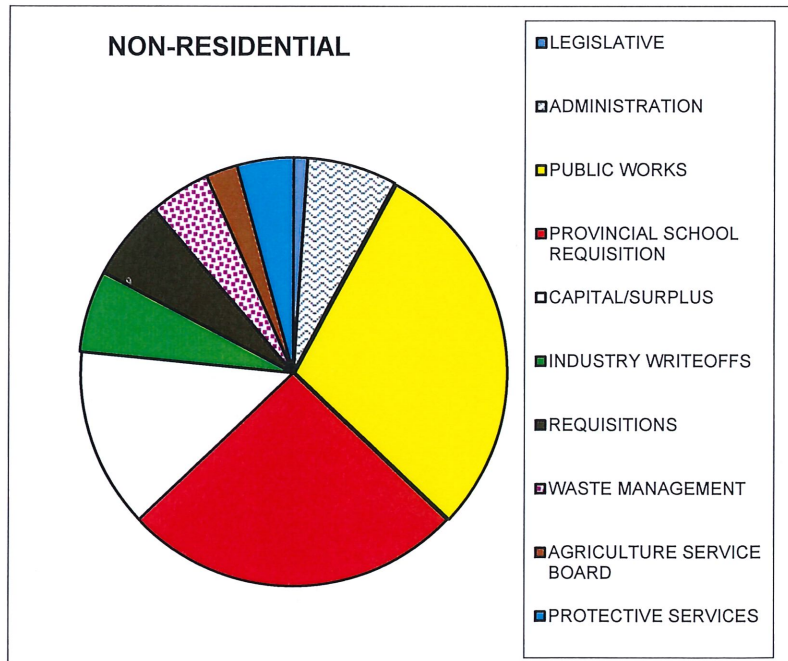


**2020
MILL RATES**

RESIDENTIAL	
LEGISLATIVE	0.024
ADMINISTRATION	0.155
PUBLIC WORKS	0.666
PROVINCIAL SCHOOL REQUISITION	2.560
CAPITAL/SURPLUS	0.310
INDUSTRY WRITEOFFS	0.140
REQUISITIONS/DONATIONS	0.137
WASTE MANAGEMENT	0.105
AGRICULTURE SERVICE BOARD	0.055
PROTECTIVE SERVICES	0.098
Total Mill rate	4.250

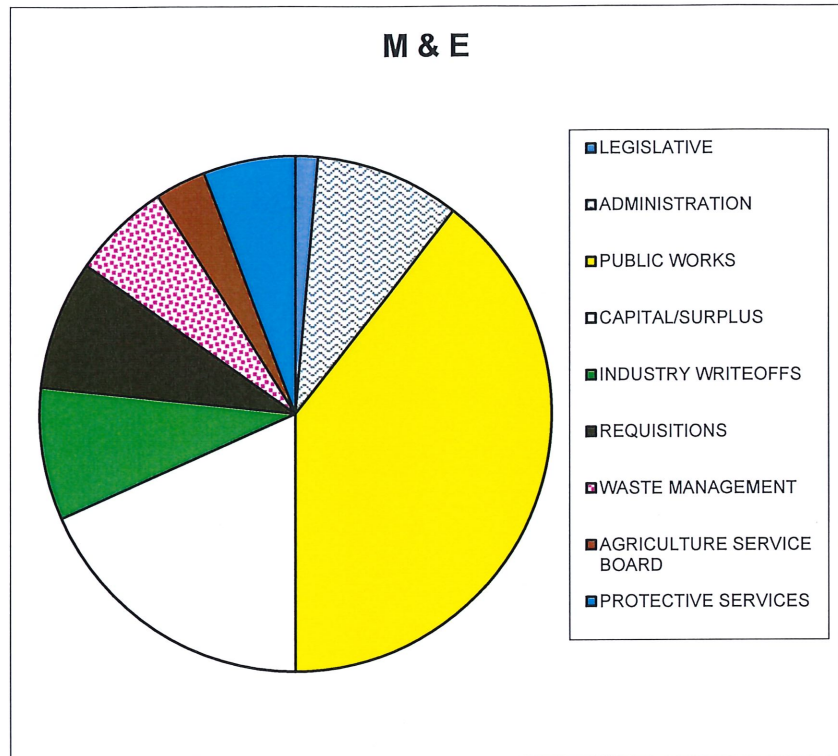


NON-RESIDENTIAL	
LEGISLATIVE	0.151
ADMINISTRATION	0.996
PUBLIC WORKS	4.263
PROVINCIAL SCHOOL REQUISITION	3.770
CAPITAL/SURPLUS	1.990
INDUSTRY WRITEOFFS	0.898
REQUISITIONS	0.877
WASTE MANAGEMENT	0.671
AGRICULTURE SERVICE BOARD	0.346
PROTECTIVE SERVICES	0.628
Total Mill Rate	14.590

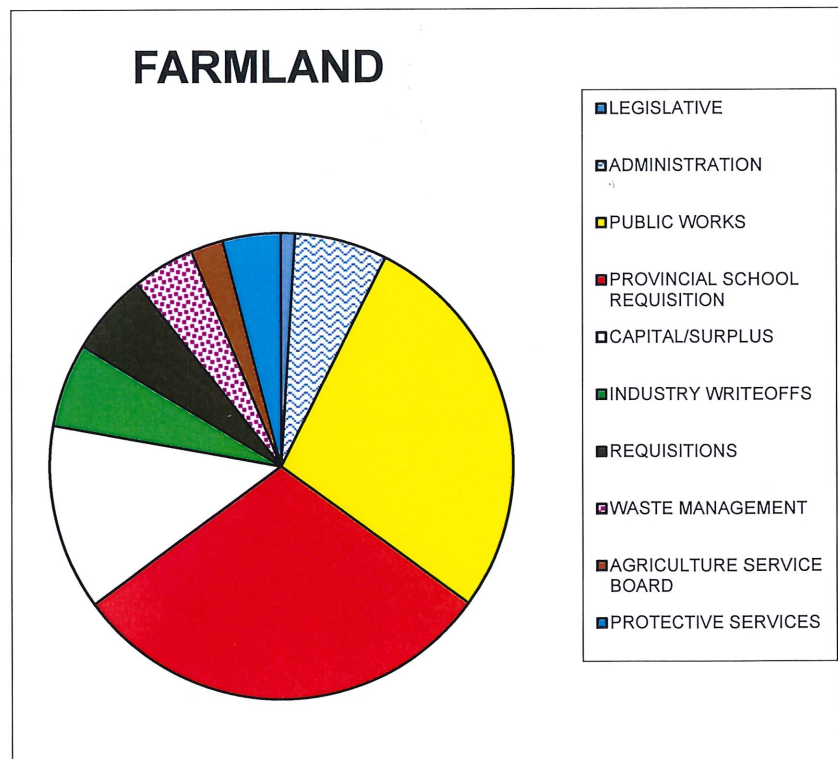


**2020
MILL RATES**

M&E	
LEGISLATIVE	0.151
ADMINISTRATION	0.996
PUBLIC WORKS	4.263
CAPITAL/SURPLUS	1.990
INDUSTRY WRITEOFFS	0.898
REQUISITIONS	0.877
WASTE MANAGEMENT	0.671
AGRICULTURE SERVICE BOARD	0.346
PROTECTIVE SERVICES	0.628
Total Mill Rate	10.820



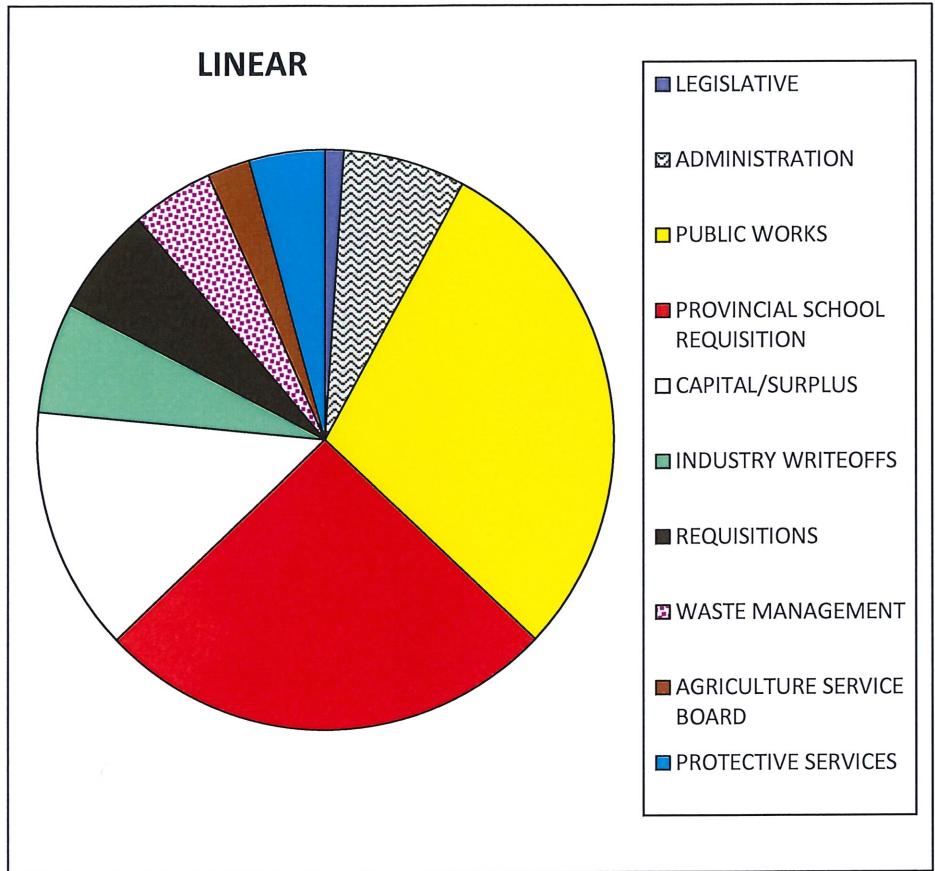
FARMLAND	
LEGISLATIVE	0.084
ADMINISTRATION	0.551
PUBLIC WORKS	2.361
PROVINCIAL SCHOOL REQUISITION	2.560
CAPITAL/SURPLUS	1.103
INDUSTRY WRITEOFFS	0.498
REQUISITIONS	0.486
WASTE MANAGEMENT	0.372
AGRICULTURE SERVICE BOARD	0.192
PROTECTIVE SERVICES	0.348
Total Mill rate	8.555



% of total expenses by category

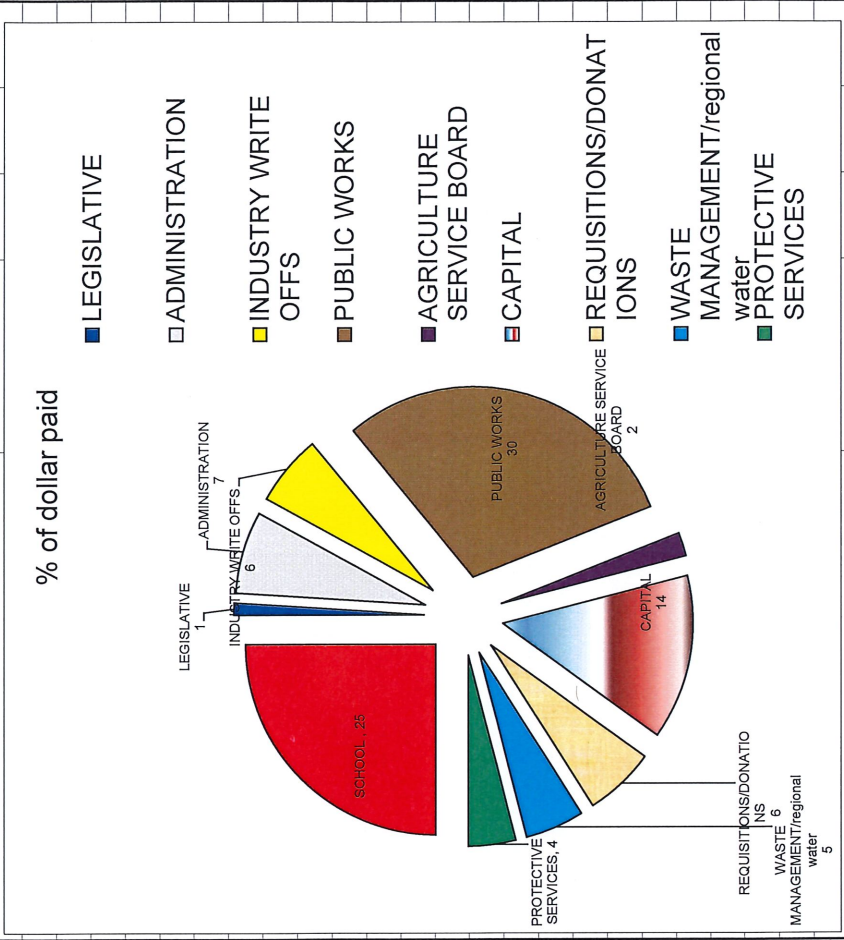
2020 MILL RATES

LINEAR	
LEGISLATIVE	0.151
ADMINISTRATION	0.996
PUBLIC WORKS	4.263
PROVINCIAL SCHOOL REQUISITION	3.770
CAPITAL/SURPLUS	1.990
INDUSTRY WRITEOFFS	0.898
REQUISITIONS	0.877
WASTE MANAGEMENT	0.671
AGRICULTURE SERVICE BOARD	0.346
PROTECTIVE SERVICES	0.628
Total Mill Rate	14.590



2020
MILL
RATES

CATEGORY	% of dollar paid
LEGISLATIVE	1
ADMINISTRATION	7
INDUSTRY WRITE OFFS	6
PUBLIC WORKS	30
AGRICULTURE SERVICE BOARD	2
CAPITAL	14
REQUISITIONS/DONATIONS	6
WASTE MANAGEMENT/regional water	5
PROTECTIVE SERVICES	4
SCHOOL	25

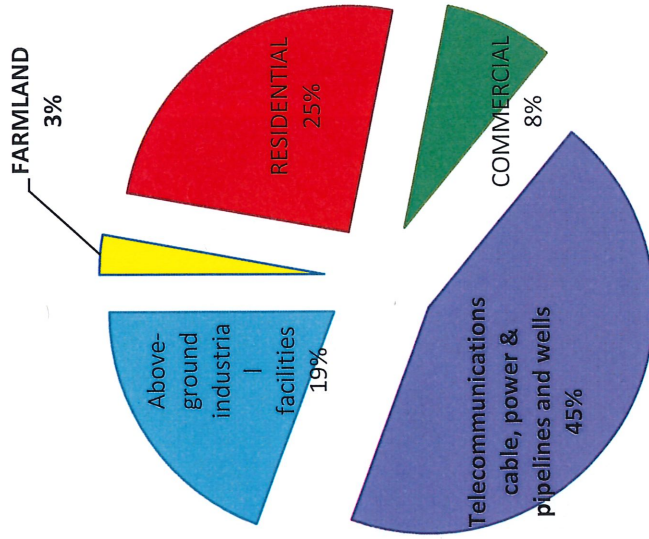


% paid of exp. + requisitions by category

this chart total exp + ASFF

2020
 % of Taxes Paid by Category
 \$25,599,480.21

% Paid



FARMLAND	2.85%
RESIDENTIAL	25.30%
COMMERCIAL	7.86%
Telecommunications cable, power & pipelines and wells	44.62%
Above-ground industrial facilities	19.37%
	100.00%