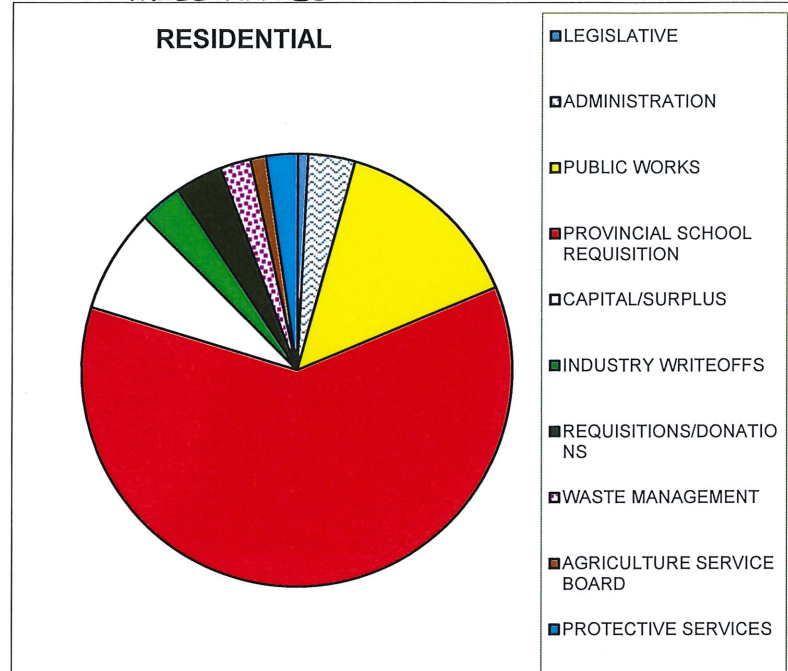
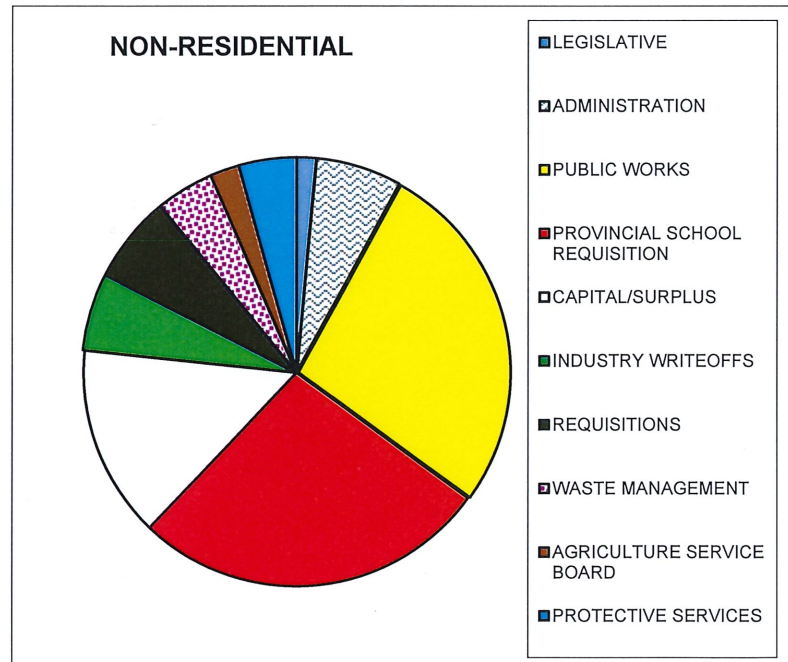


**2021
MILL RATES**

RESIDENTIAL	
LEGISLATIVE	0.034
ADMINISTRATION	0.152
PUBLIC WORKS	0.625
PROVINCIAL SCHOOL REQUISITION	2.640
CAPITAL/SURPLUS	0.338
INDUSTRY WRITEOFFS	0.135
REQUISITIONS/DONATIONS	0.152
WASTE MANAGEMENT	0.101
AGRICULTURE SERVICE BOARD	0.051
PROTECTIVE SERVICES	0.102
Total Mill rate	4.330

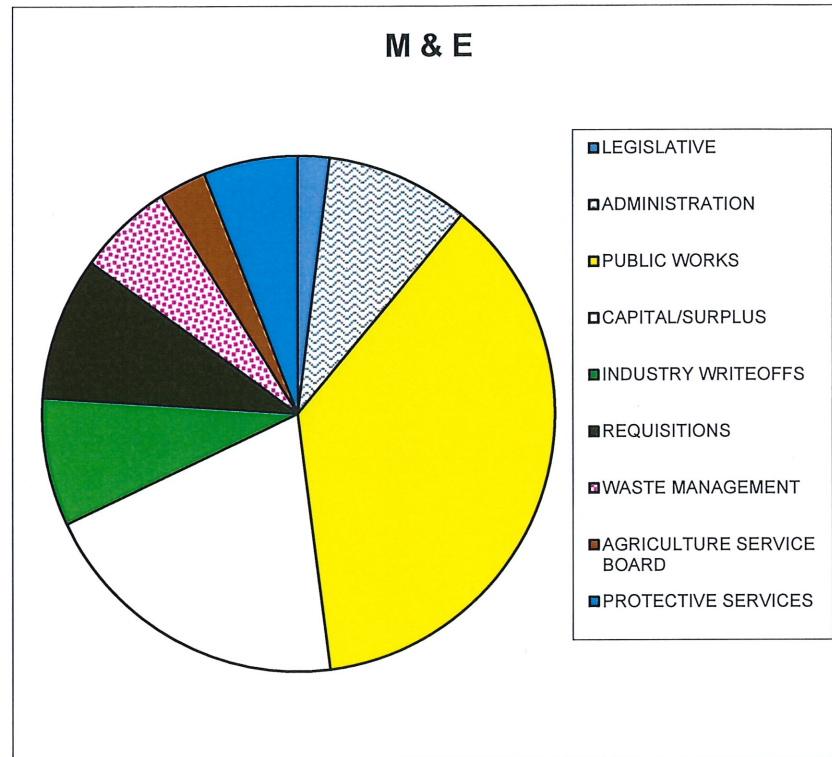


NON-RESIDENTIAL	
LEGISLATIVE	0.216
ADMINISTRATION	0.974
PUBLIC WORKS	4.003
PROVINCIAL SCHOOL REQUISITION	4.030
CAPITAL/SURPLUS	2.164
INDUSTRY WRITEOFFS	0.866
REQUISITIONS	0.974
WASTE MANAGEMENT	0.649
AGRICULTURE SERVICE BOARD	0.325
PROTECTIVE SERVICES	0.649
Total Mill Rate	14.850

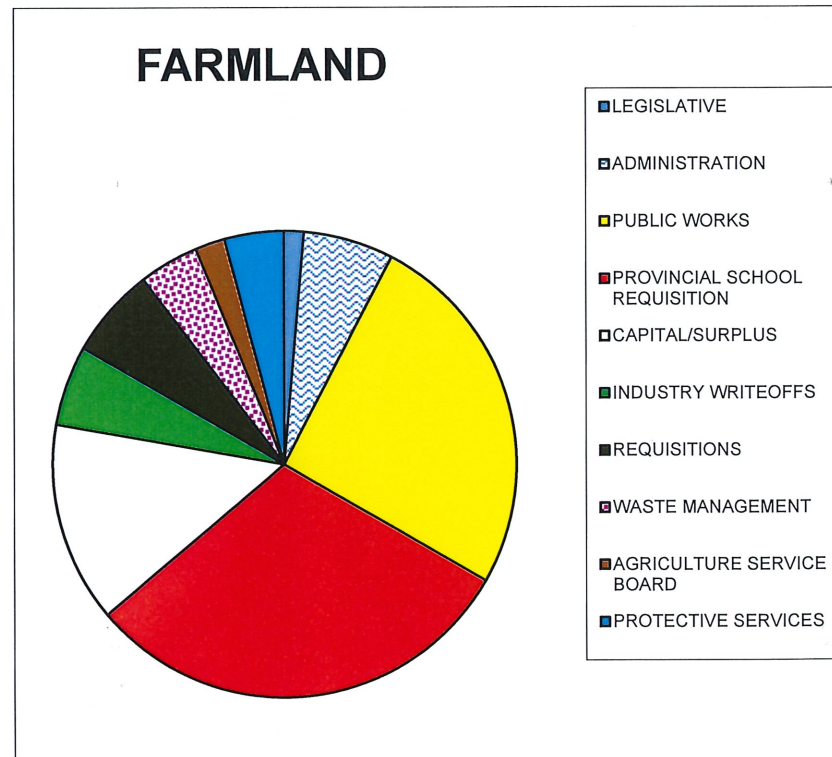


2021
MILL RATES

M&E	
LEGISLATIVE	0.216
ADMINISTRATION	0.974
PUBLIC WORKS	4.003
CAPITAL/SURPLUS	2.164
INDUSTRY WRITEOFFS	0.866
REQUISITIONS	0.974
WASTE MANAGEMENT	0.649
AGRICULTURE SERVICE BOARD	0.325
PROTECTIVE SERVICES	0.649
Total Mill Rate	10.820

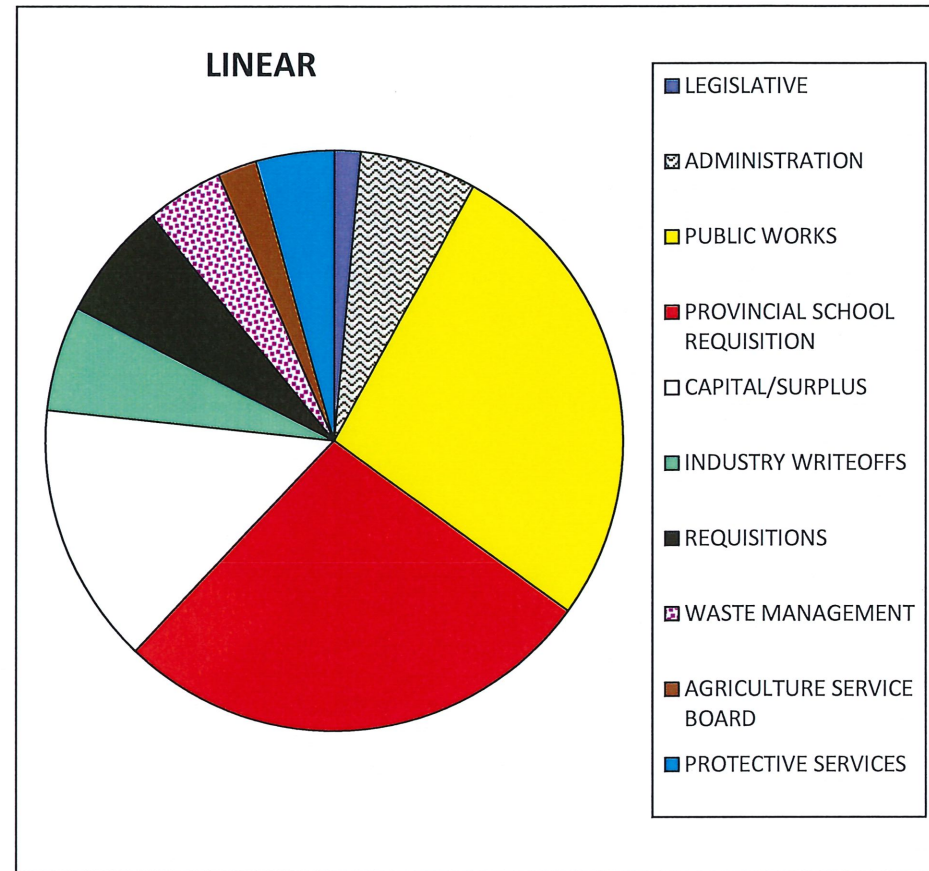


FARMLAND	
LEGISLATIVE	0.120
ADMINISTRATION	0.540
PUBLIC WORKS	2.218
PROVINCIAL SCHOOL REQUISITION	2.640
CAPITAL/SURPLUS	1.199
INDUSTRY WRITEOFFS	0.480
REQUISITIONS	0.540
WASTE MANAGEMENT	0.360
AGRICULTURE SERVICE BOARD	0.180
PROTECTIVE SERVICES	0.360
Total Mill rate	8.635



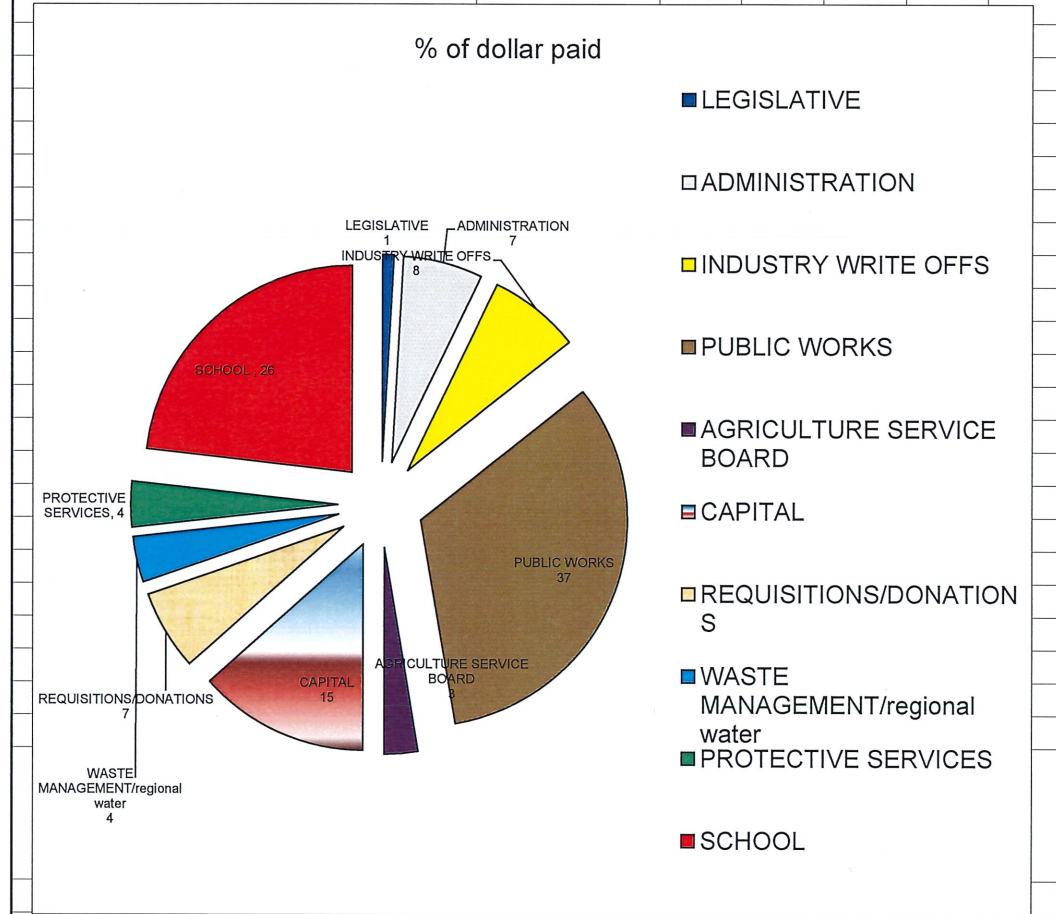
2021
MILL RATES

LINEAR	
LEGISLATIVE	0.216
ADMINISTRATION	0.974
PUBLIC WORKS	4.003
PROVINCIAL SCHOOL REQUISITION	4.030
CAPITAL/SURPLUS	2.164
INDUSTRY WRITEOFFS	0.866
REQUISITIONS	0.974
WASTE MANAGEMENT	0.649
AGRICULTURE SERVICE BOARD	0.325
PROTECTIVE SERVICES	0.649
Total Mill Rate	14.850



2021
MILL
RATES

CATEGORY	% of dollar paid					
LEGISLATIVE	1					
ADMINISTRATION	7					
INDUSTRY WRITE OFFS	8					
PUBLIC WORKS	37					
AGRICULTURE SERVICE BOARD	3					
CAPITAL	15					
REQUISITIONS/DONATIONS	7					
WASTE MANAGEMENT/regional water	4					
PROTECTIVE SERVICES	4					
SCHOOL	26					



% paid of exp. + requisitions by category

this chart total exp + ASFF