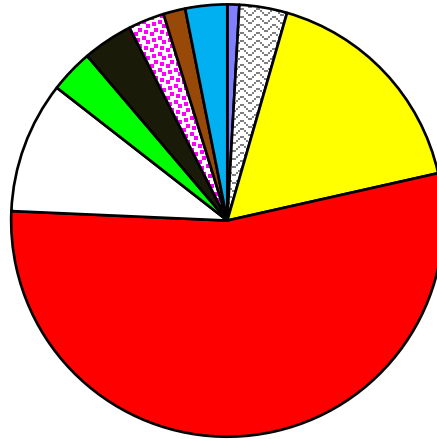


2023 MILL RATES

RESIDENTIAL

LEGISLATIVE	0.038
ADMINISTRATION	0.152
PUBLIC WORKS	0.725
PROVINCIAL SCHOOL REQUISITION	2.309
CAPITAL/SURPLUS	0.419
INDUSTRY WRITEOFFS	0.138
REQUISITIONS/DONATIONS	0.160
WASTE MANAGEMENT	0.115
AGRICULTURE SERVICE BOARD	0.070
PROTECTIVE SERVICES	0.133
Total Mill rate	4.259

RESIDENTIAL

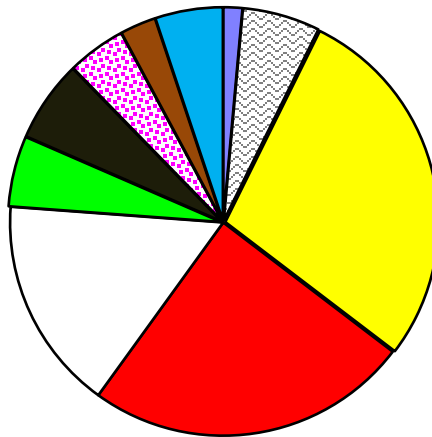


- LEGISLATIVE
- ADMINISTRATION
- PUBLIC WORKS
- PROVINCIAL SCHOOL REQUISITION
- CAPITAL/SURPLUS
- INDUSTRY WRITEOFFS
- REQUISITIONS/DONATIONS
- WASTE MANAGEMENT
- AGRICULTURE SERVICE BOARD
- PROTECTIVE SERVICES

NON-RESIDENTIAL & LINEAR

LEGISLATIVE	0.206
ADMINISTRATION	0.844
PUBLIC WORKS	4.025
PROVINCIAL SCHOOL REQUISITION	3.531
CAPITAL/SURPLUS	2.326
INDUSTRY WRITEOFFS	0.768
REQUISITIONS	0.887
WASTE MANAGEMENT	0.638
AGRICULTURE SERVICE BOARD	0.390
PROTECTIVE SERVICES	0.736
Total Mill Rate	14.351

NON-RESIDENTIAL

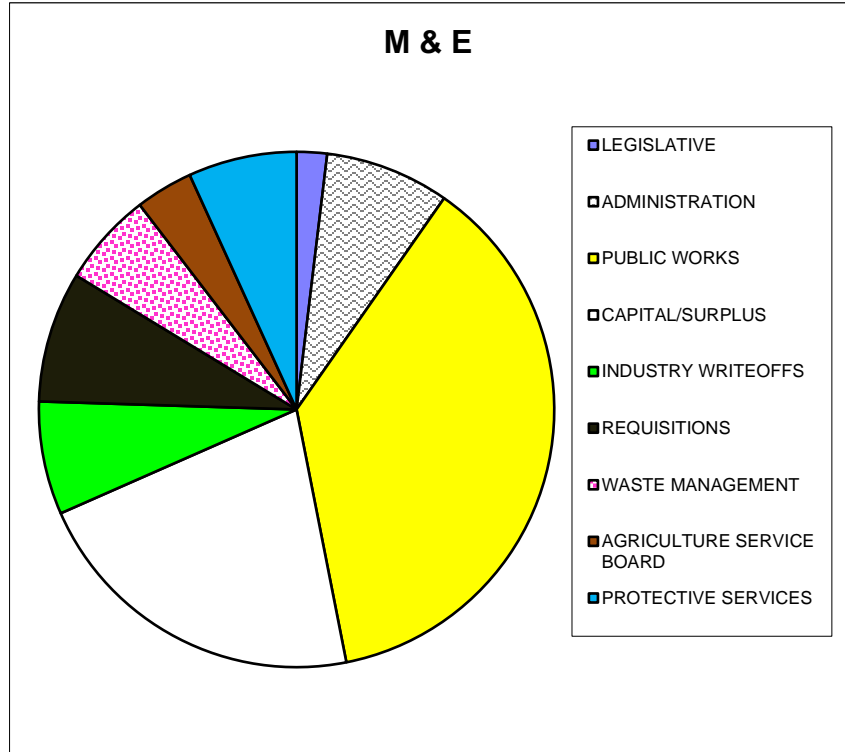


- LEGISLATIVE
- ADMINISTRATION
- PUBLIC WORKS
- PROVINCIAL SCHOOL REQUISITION
- CAPITAL/SURPLUS
- INDUSTRY WRITEOFFS
- REQUISITIONS
- WASTE MANAGEMENT
- AGRICULTURE SERVICE BOARD
- PROTECTIVE SERVICES

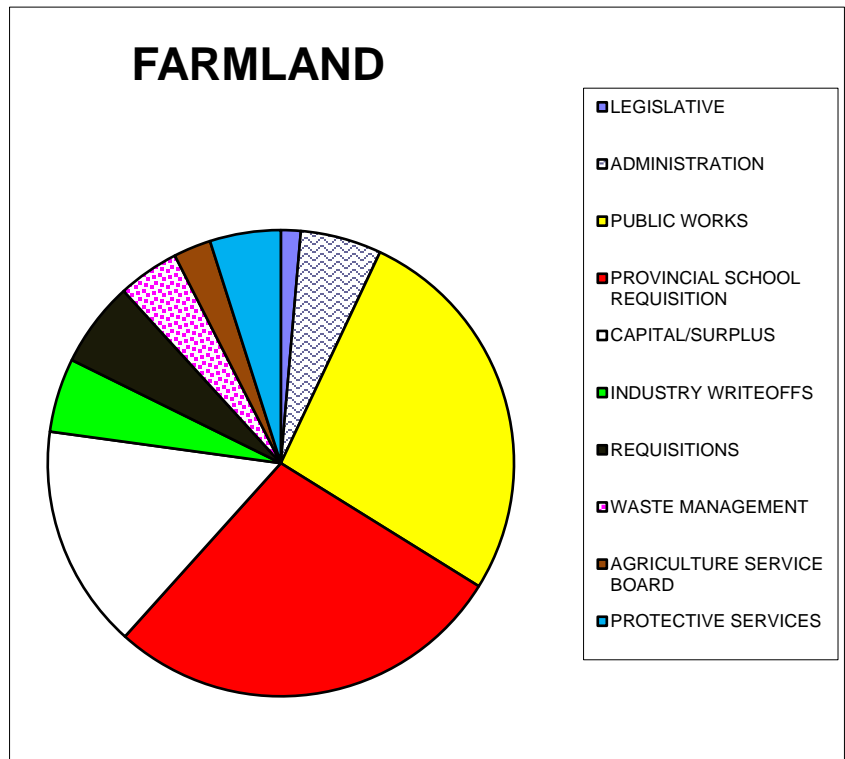
% of total expenses by category

2023 MILL RATES

M&E	
LEGISLATIVE	0.206
ADMINISTRATION	0.844
PUBLIC WORKS	4.025
CAPITAL/SURPLUS	2.326
INDUSTRY WRITEOFFS	0.768
REQUISITIONS	0.887
WASTE MANAGEMENT	0.638
AGRICULTURE SERVICE BOARD	0.390
PROTECTIVE SERVICES	0.736
Total Mill Rate	10.820



FARMLAND	
LEGISLATIVE	0.114
ADMINISTRATION	0.467
PUBLIC WORKS	2.230
PROVINCIAL SCHOOL REQUISITION	2.309
CAPITAL/SURPLUS	1.288
INDUSTRY WRITEOFFS	0.426
REQUISITIONS	0.492
WASTE MANAGEMENT	0.354
AGRICULTURE SERVICE BOARD	0.216
PROTECTIVE SERVICES	0.408
Total Mill rate	8.304



% of total expenses by category

2023 MILL RATES

SMALL BUSINESS	
LEGISLATIVE	0.154
ADMINISTRATION	0.633
PUBLIC WORKS	3.021
PROVINCIAL SCHOOL REQUISITION	3.531
CAPITAL/SURPLUS	1.746
INDUSTRY WRITEOFFS	0.577
REQUISITIONS	0.666
WASTE MANAGEMENT	0.479
AGRICULTURE SERVICE BOARD	0.292
PROTECTIVE SERVICES	0.552
Total Mill Rate	11.651

